

GalvinAssist® CP Lead Safe™ Basin & Sink Set



PRODUCT CODES:

- 110.01.00.03 - GalvinAssist® CP Lead Safe™ Lever Basin Set with 1/4 Turn
110.00.00.03 - GalvinAssist® CP Lead Safe™ Cross Basin Set with 3/4 Turn
110.10.00.03 - GalvinAssist® CP Lead Safe™ Cross Sink Set with 3/4 Turn

SPECIFICATIONS

- Chrome plate for easy cleaning and durability.
- Simple servicing and readily available parts.
- Quality controlled. Every tap is tested.
- Lead Safe™ brass construction*.

IMPORTANT:

*Our Lead Safe™ product range is compliant with the Lead Free Requirements of the NCC 2022 Vol. Three, Clause A5G4(2) and NSF/ASNI 372.
** Any flow controller incorporated in the outlet to be tightened to prevent removal by hand. As Per AS3718

WARNINGS: Special attentions to be paid on notes, photos, images, or drawings of assembly steps marked with the warning symbol.



TECHNICAL DATA

Inlet	1/2" CU / BSP	
Outlet	Laminar	
Headworks	Ceramic Disc	
Working Pressure Range (kPa)	Min	150
	Max	500
Working Temperature Range (°C)	Min	5
	Max	60
Nominal Flow Rate (LPM)	110.10.00.03 = 4.86 LPM	
	110.00.00.03 = 5.13 LPM	
	110.01.00.03 = 5.13 LPM	
Construction	Lead Free Brass	
Finish	Chrome	

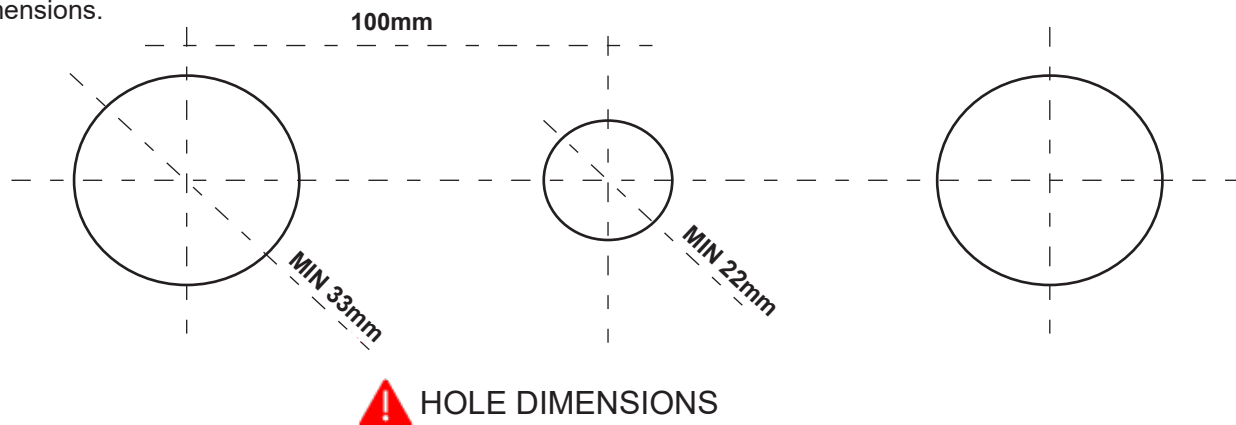
NOTE: Galvin Engineering continually strive to improve their products. Specifications may change without notice

TOOLS REQUIRED

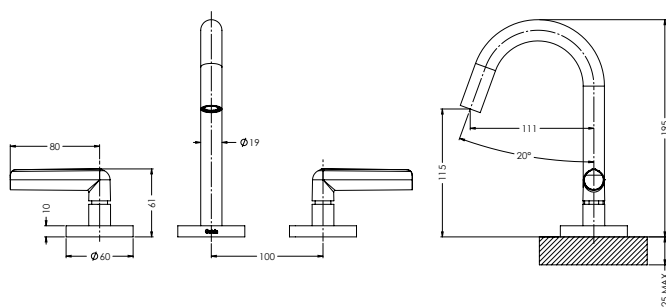
-Spanner

PRE-INSTALLATION

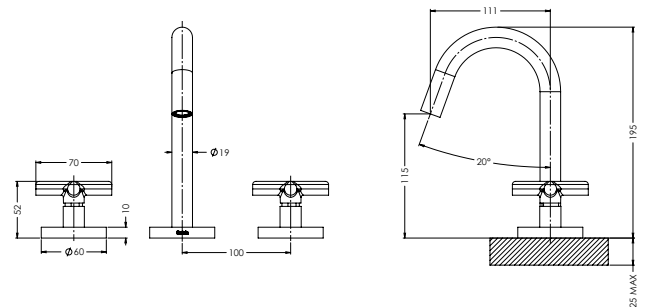
- Before installation, all lines must be flushed.
- Galvin Engineering recommends the installation of strainers and pressure reducing valves (when necessary) to ensure clean consistent supply. Debris or poor water quality could affect the performance of the unit.
- If the mounting hole does not already exist, mark out and drill the holes on the bench, as shown in rough-in dimensions.



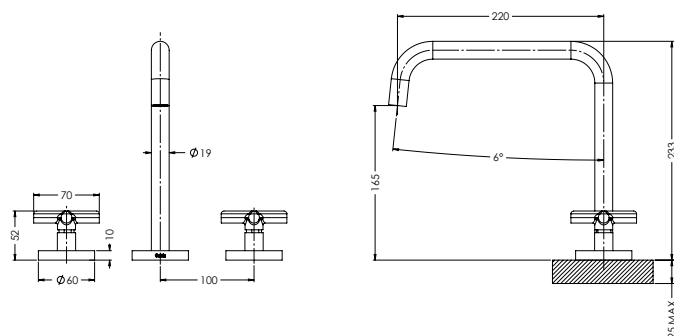
DIMENSIONS



110.01.00.03
Lever Basin Set with 1/4 Turn



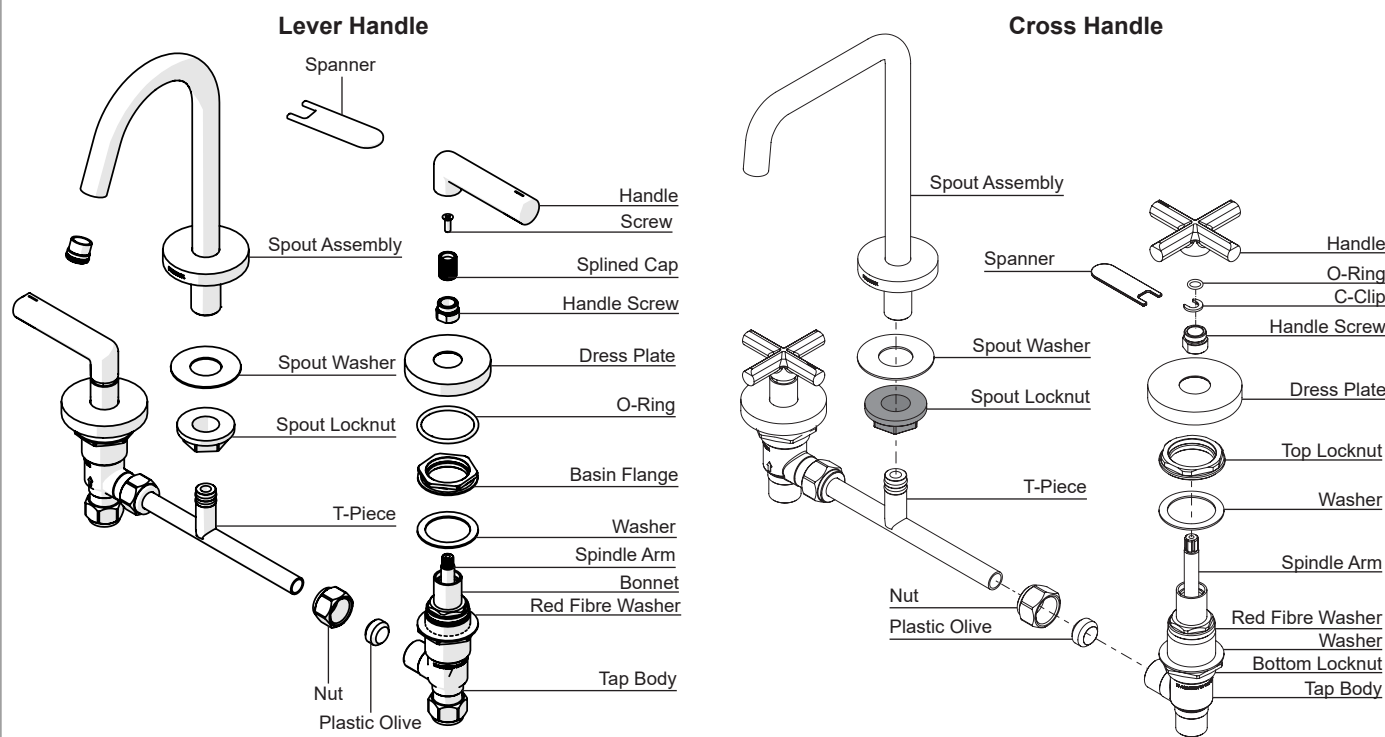
110.00.00.03
Cross Basin Set with 3/4 Turn



110.10.00.03
Cross Sink Set with 3/4 Turn

INSTALLATION

INSTALLATION COMPLIANCE: Galvin Engineering products must be installed in accordance with these installation instructions and in accordance with AS/NZS 3500, the PCA and your local regulatory requirements. Water and/or electrical supply conditions must also comply to the applicable national and/or state standards. Failing to comply with these provisions shall void the product warranty and may affect the performance of the product.



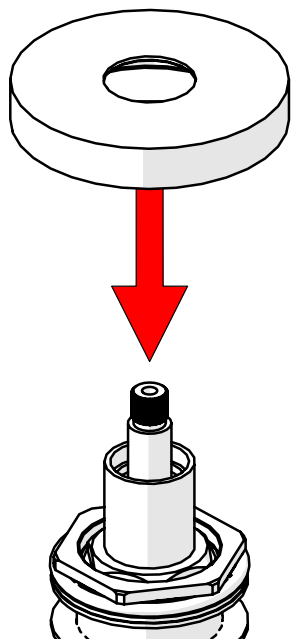
1.

- Measure centre distance between holes in Basin Top and cut the T-Piece to required length.
- Remove Handles from Wall Top Assemblies.
- Fit Nuts and Plastic Olives to each end of the T-Piece, connect to the Tap Bodies and fasten Nuts.

PLEASE NOTE
Adjust the Top and Bottom Locknuts to ensure the Red Fibre Washer sits flush with Basin surface as shown:
RED FIBRE WASHER FLUSH WITH BASIN SURFACE

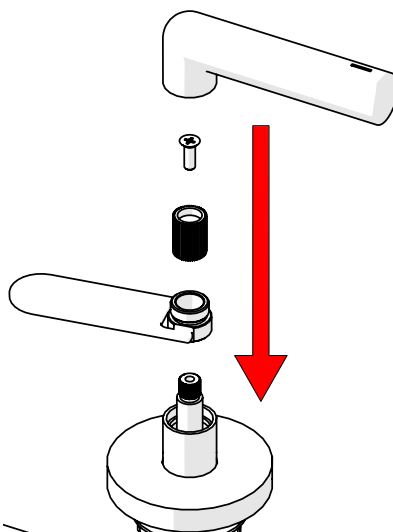
2.

- Push Assembly up through the holes in the Basin Top.
- Fasten both Tap Bodies using the Locknuts.



- 3.**
- Firmly push on the Dress Plates to Tap Bodies.

Lever Handle



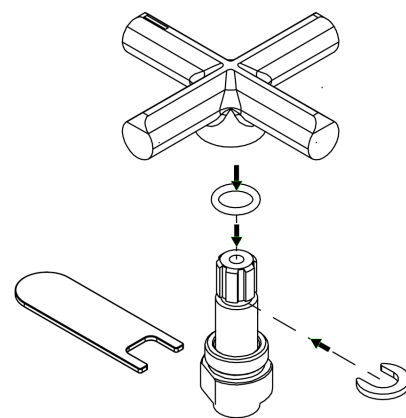
- 4a.**
- Ensure that both Taps are in the closed position.

- Place the Handle Screw over the Spindle Arm.

- Fit the Splined Cap onto the Spindle Arm and fasten using the Screw provided.

- Fit the Handle onto the Spindle Arm and fasten to Handle Screw using the Spanner provided.

Cross Handle



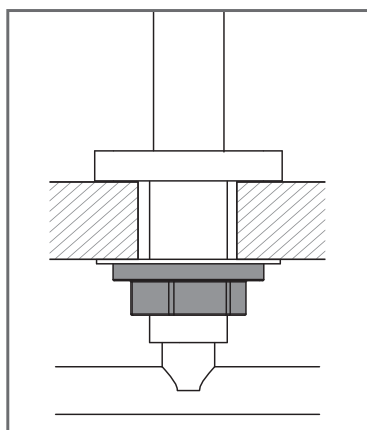
- 4b.**
- Ensure that both Taps are in the closed position.

- Fit the Handle Screw over the Spindle Arm.

- Fit the C-Clip into the groove in the Spindle Arm.

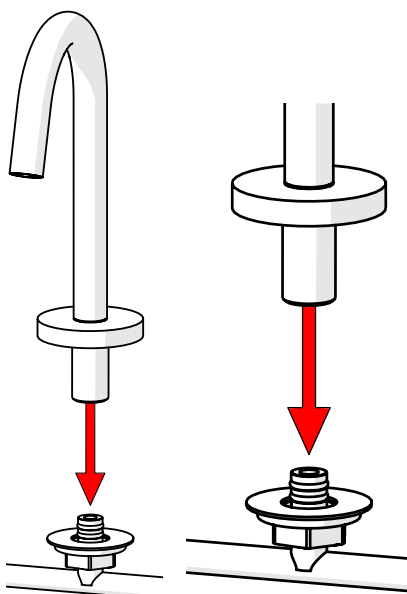
- Fit the O-Ring then the Handle onto the Spindle Arm.

- Fasten the Handle Screw using the Spanner provided.

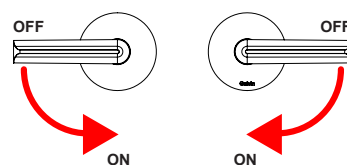


- 5.**
- Push Spout onto T-Piece.
- Firmly fasten Spout Locknut underneath Benchtop.

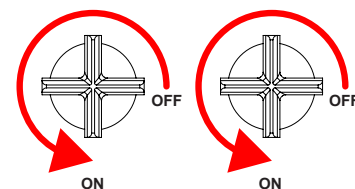
- Connect to water supply. Test and check for leaks.



Lever Handle

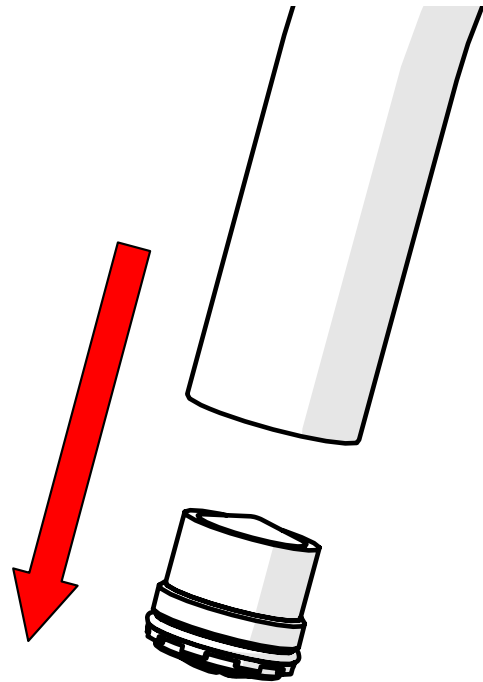


Cross Handle



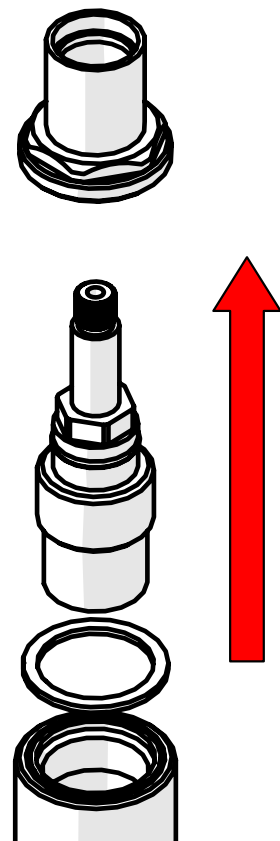
REMOVE & INSPECT FLOW REGULATING AERATOR

- 1. Remove Aerator Using Supplied Key.**
- Clean and re-install.



REMOVE & INSPECT CARTRIDGE

- 1. Remove Cartridge**
- Remove Handle reversing installation method
- Unscrew Bonnet
- Inspect for debris and clean. Replace if necessary.
- Once cleared reverse above actions.



TROUBLESHOOTING

PROBLEM	CAUSE	RECTIFICATION
Tap is leaking	Cartridge damaged	Remove and inspect the cartridge, remove debris and/or replace if damaged
	Tap incorrectly installed	Follow the installation steps above when fitting the tap.
Tap has inconsistent flow	Blocked flow regulator	Follow the instructions above to remove flow regulator from the body and check for debris. Install an inline strainer to stop further blockages.
Tap moves on basin	Insufficiently tightened	Follow the steps above in relation to tightening the installation.
Water temperature is opposite to the handle markings	Inlet hoses connected incorrectly	Switch the hoses connection on the inlets
	Inlet hoses connected to wrong isolating valves	Switch the hoses connection on the isolating valves

WARRANTY

Galvin Engineering products are covered under our Manufacturer's Warranty. Galvin Engineering products must be installed in accordance with the installation instructions and in accordance with AS 3500 and NCC Volume Three, relevant Australian Standards and local authorities applicable to product being installed. Water and electrical supply conditions must also comply to the applicable national and/or state standards, failing to comply with these provisions may void the product warranty and affect performance of the product.

Please visit www.galvinengineering.com.au to view the full warranty, our Installation Compliance and Maintenance & Cleaning information as well as any other additional information.